

Whimble News

April/May 2025



Summer is on the way!
(Photo credit New Fountain FB page)

Find us online:

www.whimblenews.uk



Olde Worlde family run Free house in the heart of Whimble.

Real Ales.

Local Ciders.

Good Food.

Open 7 days a week 11am -11pm.

Serving food from Wednesday through to Sunday.

Lunch is served from 12pm – 2:30pm Wed – Sat.

Evening meals are served from 5:30pm – 8:30pm Wed –Fri.

Evening meals are served from 6pm - 9pm on Sat.

Sunday meals are served from 12pm – 6pm.

Bookings can be made via the phone or through our website.

Tel 01404 643730 www.newfountaininn.com



A LOCAL PUB FOR ALL



Please keep an eye on our Facebook page for info on upcoming events, such as quiz nights, open mic and live music.

Hello Whimble News Readers,

Spring into Action!

As the days grow longer and the gardens bloom with life, spring is finally here in our beloved Devon village. It's that time of year when we shake off the winter cobwebs, embrace the fresh air, and - let's be honest - start making bold gardening plans we'll only half complete. But whether you're planting tulips or simply enjoying the seasonal sunshine from a well-positioned garden bench, there's plenty to keep you entertained this season.

Events Not to Miss!

Whimble Fest 2025: Mark your calendars, folks! This year's Whimble Fest is set for 5th July (see page 8 for details). A celebration of local food, drink, music, and merriment—basically, all the best things in life wrapped into one glorious summer's day.

Ottery St Mary Choral Society's Easter Concert: A special mention goes to our tuneful neighbours at Ottery St Mary Choral Society, who are hosting an evening event on Saturday, 12th April at 19:30. An evening of zero-effort listening—simply sit back, soak in the harmonies, and let others do all the hard work (see page 22).

Meet the Man Behind the Grass: Ever wondered who keeps our football pitch looking tip-top? Check out Ten Questions with Whimble Football's Groundsman on page 22—because good turf doesn't just happen, people!

Easter Church Services: For those looking to celebrate the season in a more reflective way, page 24 lists all our local church services across the Easter period.

Fancy a Film Night? The Front Row Club (page 41) is your go-to for a social evening with the silver screen. Pick a flick, grab some popcorn, and enjoy a night out without the cinema prices.

So, whatever your springtime plans - whether it's belting out hymns, basking in festival fun, or just mastering the art of the perfect lawn stripe - there's something for everyone.

Enjoy the season, and see you out and about!

Happy Easter all 🐰

Sam x

Maths & Physics Online Tutoring

GCSE & A-Level

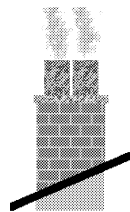
*Personal coaching to suit your needs,
with experienced mathematician.
Member of the Tutor's Association.*

Daytime/ Evening/ Saturdays.

For more information please see my website:
robertpooleymaths.co.uk

Robert Pooley 01404 822333
robertpooleymaths@gmail.com

Chimneys Wood Burners Fires



Swept, Installed, Repaired,
Lined and Built

"All your chimney needs"

Alf Butler

Tel: 01404 811843

A fully insured and HETAS
registered Company

TRY OUR PAYMENT PLAN

3, 6, 9 or 12 months
THE EASY WAY
TO PAY

RIDGE ROOFING



AT THE TOP

Guaranteed
to beat any
genuine
produced
quote

FOR BOTH
QUALITY
& PRICE



& SCAFFOLDING SERVICES LTD

ALL ASPECTS OF ROOFING UNDERTAKEN - FROM LEAKY ROOFS TO RE-ROOFS

Ridge Roofing Ltd is a well-established company with over 25 years' experience behind them,
working in partnership with most of the leading estate agencies.

- Slating • Tiling • Flat roofing • Fibreglass flat roofs • Chimneys/
- Leadwork • Turnerized slate roofs • Guttering/uPVC/fascia boards
- Storm damage/insurance work • All grant work undertaken
- Insurance backed guarantees • Full public liability insurance
- Free written quotations • All work guaranteed



T: 01404 891813 M: 07789 555685 • stephen.wattsr@gmail.com • www.ridge-roofing.com



What's On In Whimble

April

- Wed 2nd: Heritage Centre reopens for the summer. 12 – 4pm Wed and Sat.
Sat 5th: Front Row Club. Victory Hall. Film starts 7.30pm. £5 on door non-members
Sun 6th: Open Mic Night. New Fountain. From 7pm.
Mon 7th: HS volunteers' get-together at the New Fountain 11am-12noon
Mon 7th: Surgery with District Councillor Todd Olive at the Hive, opp TF, 4 - 7pm.
Tue 8th: WI. 2pm The Hub The Art of pressing flowers - Sarah Pepper
Tue 8th: HMS Pinafore rehearsal. Whimble Cricket Club. 7.30 – 9pm (TBC)
Sat 12th: Churchyard Clear Up at St Mary's. Volunteers needed.
Sun 13th: Cash Bingo: New Fountain. 7.30pm. Book a table
Tue 15th: HMS Pinafore rehearsal. Whimble Cricket Club. 7.30 – 9pm (TBC)
Sat 19th: Coffee and Cake back at St Marys until Oct 25th. Every Sat 10.15 – 12pm.
Sun 20th: Quiz Night. New Fountain Inn. 7.30pm.
Tue 22nd: HMS Pinafore rehearsal. Whimble Cricket Club. 7.30 – 9pm
Tue 22nd: Whimble Parish Council meeting. Victory Hall. 7pm. All welcome.
Fri 25th: Junior training starts at the Cricket Club until 18th July.
Sat 26th: Soup and Sarnie in the Victory Hall. 12md to 1.30pm
Tue 29th: HMS Pinafore rehearsal. Whimble Church. Time TBC.
Wed 30th: Whimble Community Choir restarts. St Mary's at 7pm. All welcome.

May

- Thurs 1st: Voting for Devon County Council election. Victory Hall.
Fri 2nd: HMS Pinafore performance. Whimble Church. 7pm. Ticketed event.
Sat 3rd: HMS Pinafore performance. Whimble Church. 7pm. Ticketed event.
Sun 4th: Open Mic Night. New Fountain. From 7pm.
Mon 5th: Surgery with District Councillor Todd Olive at the Hive, opp TF, 4 - 7pm.
Sat 10th: Front Row Club. Victory Hall. Film starts 7.30pm. £5 on door non-members
Sun 11th: Cash Bingo: New Fountain. 7.30pm.
Sun 11th: Visit to RHS Rosemoor with Whimble Gardening Club.
Tue 13th: WI. 2pm at The Hub Tea and cake AGM
Mon 12th: HS volunteers' get-together at the New Fountain 11am-12noon
Sun 18th: Quiz Night. New Fountain Inn. 7.30pm.
Mon 19th: Whimble Parish Council AGM. Victory Hall. 7pm. All welcome.
Fri 30th: The Bar Steward Sons of Val Doonican. Whimble Victory Hall. 8pm
Sat 31st: Soup and Sarnie in the Victory Hall. 12md to 1.30pm

June

- Sun 1st: Open Mic Night. New Fountain. From 7pm.
Mon 2nd: HS volunteers' get-together at the New Fountain 11am-12noon
Mon 2nd: Surgery with District Councillor Todd Olive at the Hive, opp TF, 4 - 7pm.
Fri 6th: Egg catching at the Cricket Club. Registration from 6pm. BBQ and bar.
Sun 8th: Cash Bingo. New Fountain. 7.30pm
Tue 10th: WI. 2pm at The Hub. In the mood, or dancing through the War - Dr. F. E. Burroughes

THE THIRSTY FARMER

SATURDAY BRUNCH MENU FROM APRIL 5TH

- Monthly Quiz Night
- Dog friendly
- Live music last Friday of the month
- Tasty new menu
- Family friendly
- Weekly specials

OPENING HOURS

MON – FRI

Open: 12:00 – 23:00

Lunch served: 12:00 – 14.30

Dinner served: 17:00-21:00

SAT

Open: 10:00 – 23:00

Brunch: 10:00 - 14:30

Food served: 12:00 – 20:00

SUN

Open: 12:00 – 22.30

Food served: 12:00 – 20:00



Keep up to date



@thethirstyfarmerwhimble



01392 305146



www.thethirstyfarmer.com

The Thirsty Farmer, Whimble, EX5 2QQ

WHIMPLE STORES



From Sam - our editor:

It is with great sadness that we learn that Rory has passed away, so there will be no article from The Stores in this issue.

On behalf of everyone involved with the News, and the entire village, we want to send our deepest love, thoughts and support to Rory's family.

He was a cherished part of our community, and we are holding you all close to our hearts during this difficult time.

With warmth and care,
The Whimple News Team.



**The Square
Whimple
EX5 2SN**



**01404
822316**

Sharon and the Team welcome you to our Stores and Coffee Shop for fresh Devon bread, milk, vegetables and eggs. Frozen, fresh and canned foods. Cards, stamps, Gift Cards, stationery and more.

We also provide Parcel sending and collection, bill payments, electricity and phone top-ups, gift cards and cash withdrawals.

Opening Times

Mondays to Fridays	08:00 to 18:00
Saturdays and Sundays	09:00 to 12:00
Public Holidays	08:00 to 12:00

WHIMPLE FEST 25

Your community-driven FREE Event

SATURDAY 5th JULY 12-5.30pm

Whimple Parish Field



SOME OF OUR LINE-UP SO FAR THIS YEAR!

Welcome to: -

Craft with Chloe (Award winning Author/Illustrator),

Chi-Quilibrium (Tarot /Reiki),

Fortitude Health Pilates,

JW Dance (2 performances),

NEW Kids' Zone with **Bouncy Castle**,

Ace Face Fantasy Face Painting,

Treasure Hunt

Little Cottage Massage,

Local Beekeepers,

Mr Bubbles, Ottery

Taekwondo demos,

Local band Upper Hand and more!

Of course we have **LOCAL FOOD, TEA TENT & CAKES**,

ICECREAMS, BAR and **CRAFT STALLS. PLUS RAFFLE**,

TOMBOLAS, BOOKS, DIG FOR VICTORY, SKITTLES, STALLS,

DEMOS, TALKS, & MUSIC etc.

Can you help? **We** always need extra
volunteers. Can you spare just 1 hour on
the day? Or helping with set up/take
down? Do you have a stall?
Can you donate a prize?

Do you run a local group?
We have funds to give you!!

Contact sue.turner1@sky.com

SAVE THE DATE -JOIN THE FUN!
SUPPORT WHIMPLE



Drainage and water main solutions

- blockages
- jetting
- CCTV surveys
- repairs
- lining
- drain tracing
- pitch fibre reforming
- pipe bursting

- septic tank/treatment plant installation
- soakaway problems
- water leak detection
- water leak repairs
- moling
- renewals
- Patio, Driveway & Decking cleaning

Tel: 01392 461670

Mobile: 07834 712345

www.drainwizard.co.uk



Reiki Healing

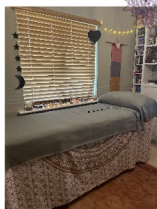
An alternative, holistic form of healing



Reiki may help you with

- Stress
- Anxiety
- Being overwhelmed
- Chakra balancing
- Pain management
- Spiritual connection
- Relaxation

1 hour session £50
30 minute session £30
Distance Reiki £30
Reiki training available



To book contact Kerry: 07791 171821
kerry@chi-quilibrium.com www.chi-quilibrium.com
40 Slewton Crescent, Whimble, EX5 2QA

Tarot Readings



Tarot Readings can give you a different perspective on life



Sometimes we feel a bit stuck, feel like we are at a crossroads, or are looking for guidance.

Whatever your question, I work with you, often creating a unique tarot spread to see what the cards reveal for you!

1 hour Tarot Reading £40
Rapid Read £15
Tarot Party (for up to 6 people) £120



Chi-quilibrium

Chi [chee] noun: the circulating life energy
Equilibrium [ek-wi-lib-ri-um] noun: a state of balance

- **Water pump**
 - supplies
 - repairs
 - installation
 - fault diagnostic
- **Private water supplies**
- **Filtration**
- **General domestic plumbing**

DPPS

07738 470274

*Friendly, professional
Whimble-based service*

chris@dpps.uk

www.dpps.uk

Devon Pump & Plumbing Services



EVERGLOW

Chimney Sweeps

Whimble based and your LOCAL sweep

NO MESS, NO FUSS

APICS Member, Fully Insured

Tel: 07522 619308

Email: everglowchimneys@gmail.com



**SFA APPROVED
CHIMNEY SWEEP**

BARRY SEAFORTH DECORATING SERVICES

Est 1979



PAINTING WALLPAPERING

SPECIALIST FINISHES MURALS TILING

COVING CARPENTRY ALTERATIONS

REFERENCES AVAILABLE

Call Barry on 01297 22434

or 07712 120635

or email: barryseaforth@gmail.com

Parish Council

Councillor Alan McArthur

The Parish Council remembers Cllr. Alan McArthur who sadly passed away recently. Cllr. McArthur dedicated 22 years of service to his local community and during his time on the Council he had been the Vice-Chair since 2013 and the Chair since May 2023.

Cllr. McArthur will be much missed by everyone involved with the Council.



Councillor co-option

The Parish Council welcomes newly co-opted councillors Sarah Johnson, Lynda Patrick and Angela Trimblett.

The Parish Council still has two vacancies so if you are interested in joining the Council please get in touch.

Community Speed Watch Initiative

The Community Speed Watch Initiative went live on Monday 24 March, with volunteers anticipated to start monitoring speeds in several locations from the end of March 2025.

This will build up an evidence base regarding the volume and speeds of traffic through the Village. This can be presented to Devon County Council Highways to consider in terms of speed limits and traffic calming measures, and East Devon District Council to consider in respect of any planning applications in the Village that come forward. The results will also be announced on the Whimple What's On Facebook page.

Play Area in Town Lane or the Parish Field

The Council has been working on a project to deliver a children's play area for younger children in Town Lane. Recently there have been problems with the play equipment in the Parish Field and this also needs to be replaced. The Parish Council doesn't have enough funding to install a new play area in Town Lane and also replace the play equipment in the Parish Field. So, a decision has to be made, which we would like public feedback on please.

The options are:

Option 1 – The Council replaces the play equipment in the Parish Field and turns the Town Lane site into a community/mindfulness garden with benches, picnic tables, flowers and trees.

Option 2 – The Council continues with the play area for younger children at the Town Lane site and removes the play equipment from the Parish Field (leaving the Pump Track only).

The Parish Council would welcome your feedback. Please send it to clerk@whimpleparishcouncil.gov.uk

Something else to consider is that East Devon District Council are upgrading the Slewton Crescent Play Area this year which is aimed at younger children.

Calling local suppliers

The Council is looking for quotes from local tradespeople for the following work:

Removal of rotten furniture & equipment in the Town Lane play area

Cutting back overhanging trees in the Town Lane play area

Cutting back and removing the brambles and foliage in the Parish Car Park

If you are interested in quoting, please contact the Parish Clerk for further information.

Contacting the Council

If you have any questions on any of the above information or anything else please do get in touch – clerk@whimpleparishcouncil.gov.uk

Amy Tregellas

Whimple Parish Clerk

Website: www.whimpleparishcouncil.gov.uk

Email: clerk@whimpleparishcouncil.gov.uk

We are also contactable on Facebook



Whimple Community Choir
Starting again Wednesday 30th April
7pm - 8:30pm St Mary's Church
Everyone is Welcome!



CARPENTER, KITCHEN FITTER JOINER

INNOVATIVE.COMPETITIVE.REPUTABLE
EXCEPTIONAL STANDARD OF COMPLETION
FLEXIBLE TO ALL CLIENTS PRECISE NEEDS

HENRY TETLEY
0786865842

EMAIL: buildwithtetley@gmail.com

SCAN QR CODE TO ACCESS MY ONLINE
PORTFOLIO OF WORK



Could a Personal Assistant make life a little easier?



The affordable alternative to home care,
where you choose who supports you

Hub Personal Assistants can help with:

- Companionship
- Domestic tasks
- Meal preparation
- Personal care
- Shopping
- Respite
- Live-care
- Assistance to appointments



Call us today for a friendly no obligation chat.

01392 982 832
www.hubcaresupport.co.uk



BRICKWORK&MASONRY

New build-extend-refurbishment-renovate
alteration-barns-hard landscape-repairs

Your friendly, reliable local tradesman

No job too small.

Telephone Mark on

822913 or
07817097721

Email - mproberts@live.co.uk

3 The Signals
Talatun Road
Whimble
Exeter
EX5 2QL



City and Guilds
Qualified

Lamb Hill Garden Machinery

• Sales • Repairs



• Servicing

Andrew has over 20 years experience
in the garden machinery industry.
Previously at Otter Nurseries & more
recently at P.J.Flegg.

FOR ALL YOUR GARDEN MACHINERY NEEDS

CALL ANDREW TODAY

01404 823100/07773 579072

Moorview Industrial Estate Straightway
Head Whimble Devon. EX5 2QT

Email: lambhillgardenmachinery@hotmail.co.uk



Otter Care Services

Specialist and trusted provision of domiciliary care services to support an individual in their own home in Ottery St Mary and the surrounding area.

With over 20 year's nursing experience in the community and within the care sector, Christine provides that additional support, personal care or any other activity that allows an individual to maintain their quality of life and independent living.

Christine is DBS cleared and fully insured. The services include:

- Companionship
- Personal Care
- Support with medication
- Escorting to appointments
- Overnight care
- Social outings
- Shopping
- Wellbeing Support
- Personal care
- Home help
- Meal time assistance
- Family Support

Contact Christine on:

Mob: 07984 150696

Email: ottercareservices@hotmail.com

Grandison
of Ottery St Mary

**Finnimore Ind Est,
Ottery St Mary**

**BRING THIS FLYER TO OUR
SHOWROOM AND ARRANGE
A FREE HOME ASSESSMENT**

**You're invited to Devon's
largest fire, fireplace and
stove showrooms**

Dear neighbour

I imagine that, by the time you read this, it will be that time of year again – campaigning for Devon County Council elections on May 1st will be in full swing.

It would be wrong of me to use this space for political reasons, but I wanted to start by making a plea – whoever you vote for, please do vote. Fewer than half of people normally vote in local elections – as opposed to around 70% of people who vote in General Elections – despite local government making spending decisions for around 20% of public spending in the UK. Locally, Devon County Council's budget is just shy of two billion pounds a year – compared to East Devon's less than thirty million. All that is to say: local elections matter too!



If you're not registered to vote, **there's still time**: you can do so until 11:59pm on Friday 11th April. You can do this online in around five minutes by visiting www.gov.uk/register-to-vote, or if you would prefer to do this via a paper form, you can download the form via the same link, or if you're unable to do so then you can contact East Devon's elections team on 01395 571529.

If you still want to vote but won't be able to vote in person on May 1st, you can register for a **postal vote** until 5pm on 14th April 2025. Visit www.gov.uk/apply-postal-vote, or if you'd prefer to apply with a paper form, this can be obtained via the link or by contacting the elections team.

Work at East Devon over the last few months has been dominated by two big-ticket items: the Local Plan, which many of you will know has been through the first of two so-called 'Regulation 19' consultations that I reported on previously – and the government's plan for reorganisation of local government.

On the first of those: by the time you read this, the 'Regulation 19' consultation on the Local Plan will have recently closed, but you can continue to follow updates via www.eastdevon.gov.uk/local-plan. There will also be a second 'Regulation 19' consultation later this year, which will look at plans for the second new community at Farringdon – including the work East Devon has been doing to learn the lessons of developer-led Cranbrook – as well as some other important topics, like how East Devon is going to control new development. In light of evidence we have commissioned around sewage capacity and South West Water investment plans.

Local government reorganisation – as I reported last edition – will eventually see East Devon and Devon County councils abolished (along with the other six district councils and one city council in Devon), and replaced by a new 'unitary' authority. Since my last update, various specific proposals have been put forward for what that configuration might look like – East/West splits, North/South splits, and so on. East Devon, for its part, has backed a model that would see our area put together with Mid Devon, Exeter, North Devon, and Torridge.

Most significantly, though, you might have seen news that Exeter City have been pursuing their own plan – which would see Exeter effectively take over parts of East Devon, Mid Devon, and Teignbridge. We don't yet know whether Exeter's ambitions would extend as far as Whimble – but I wanted to be very clear that I will be strongly opposing any proposal that would see our rural area being absorbed into an “Exeter+” unitary council, dominated by the concerns and needs of the city.

Lastly, I regret that my Monday morning surgery sessions, on the third Monday of every month, will no longer be available. I've tried to keep this slot open and free despite taking on a new full time job but it's proving increasingly difficult to protect this time – and I am keen to avoid missing or disappointing people that come along. My Monday evening surgeries, 4pm to 7pm on the first Monday of every month, in the usual place, no appointment needed, will be continuing – and as always, I'm happy to arrange other times to sit down for a chat if you can't make that slot: do get in touch at todd.olive@eastdevon.gov.uk or on 07925 847933. It'd be great to hear from you.

Cllr Todd Olive, Ward Member for Whimble & Rockbeare
Portfolio Holder for Strategic Planning East Devon District Council

The key to your future peace of mind

Marsh Barton
01392 277467
Units 1,2 & 6 The Space Place
Alphin Brook Road
Marsh Barton
Exeter EX2 8RG



Sidwell Street
01392 217328
131 Sidwell Street
Exeter
EX4 6RY

email: sales@guardiansecuritysw.co.uk
www.guardiansecuritysw.co.uk



POW+R Group continues to investigate and report planning issues to villagers, so that we all know what is, and sometimes, what is not happening. Over the past few years there have been some unusual developments taking place in our village. This includes a stone ecclesiastic building in the early gothic style. Nearby, there is another new building of rustic appearance as a new village forge / wheelwright which is probably the first in the village for nearly 100 years. In addition, within the conservation area is a three-story property with stucco finish, painted in light grey and an attractive blue front door. Further along the tributary of the Clyst River, is another new construction of a two story double fronted cottage with river views. The critical and concerning point is that all these have been constructed without planning permission and reference to the draft Neighbourhood Plan.

These are examples of the latest stage of development which follows on from tiny doors, which gain access to the interior of enchanted village trees as homes for very small inhabitants. It is likely, although not seen during daylight, that the small people are responsible for the recent buildings in the village square.

One could argue that this 'small-scale development' in Whimble is infinitely preferable to the 83 houses proposed by Cllr. Todd Olive for the village, this being linked to the EDDC Strategic Housing Policy in which Todd Olive is the Chair.

In further developments the government signalled in December 2024, its intent to end the current system of District and County Councils and smaller unitary Councils. Instead, these are to be replaced by unitary authorities covering much larger areas, with a guideline minimum population of 500,000 people.

This concept is complete folly and diminishes local democratic accountability. This is demonstrated when we look at the effects of the demise of Cornish District Councils and the creation of the Cornwall Unitary Authority. There are now only 87 councillors, when previously there were 249 councillors covering the six district councils. Some local councillors say that they are already working more than 40 hours a week, which makes it a full-time job and with a smaller pool of councillors to draw expertise from, it is no longer the diverse cohort from a deeper cross section of society.

Clearly, fewer councillors mean a reduced amount of time to adequately represent the local people, which goes against the principles of democracy.

It is not a question of duplication as District Councils have more local responsibilities and the County Councils cover pan county services, including education, social services, public transport, highways, waste disposal, and trading standards. In addition, much of the decision-making is at local level, where it should be – it's called, 'Localism'.

It seems that East Devon is accepting this radical change and Devon County Council is exploring options to form two unitary councils; one combining East, Mid and North Devon with Torridge and Exeter, and another covering South Hams, Teignbridge and West Devon with Torbay. Plymouth would remain a separate Unitary Authority. In effect Devon County Council will be 'no more'. The big question facing local government is not its structure but, after 14 years of underfunding, it is the state of local schools, hospitals, local highways and the cost of Adult and Children's Social Care and Special Educational Needs. In addition, we have seen the closure of those elements in society, which contribute to citizens' wellbeing and cultural activities.

The timeline for creating unitary authorities in Devon appears to be underway with key dates as follows:

- **March 21, 2025:** Interim proposals for reorganisation are due.
- **November 28, 2025:** Full proposals must be submitted.
- **April/May 2027:** Elections for shadow authorities will take place.
- **April 2028:** The new unitary authorities are expected to officially take over.

An email has been submitted by POW+R Group to EDDC outlining our views on this. This is a fast-changing situation and there may be further options to be considered. Clearly, if there is no more EDDC then the Local Plan is in jeopardy. If a district council is abolished before its Local Plan is adopted, the new unitary authority may decide to either adopt the plan, modify it, or start over. This has happened in other areas, such as Buckinghamshire, where the new authority adopted some plans but withdrew others. The process could lead to delays, especially if the reorganisation disrupts ongoing planning efforts, and could mean the interests of this part of Devon could be superseded by the desire for more housing as a sub-community of Exeter. N.B. **The Greater Exeter Strategic Plan** which was discontinued after EDDC's withdrawal in 2020 and the councils involved shifted focus to developing Local Plans instead.

The Parish Council must now complete the Draft Neighbourhood Plan with haste, otherwise there may be more than 83 new houses imposed on Whimple.

Continued overleaf

In the case of the EDDC Strategic Housing Policy further consultation, under the banner of 'Commonplace', POW+R has responded to the interim consultation by the due date of the 21st March 2025. Information supplied by the East Devon District Council stated that it promotes affordable housing. We have asked the council what is 'affordable', because clearly thousands can't afford these new homes. We fundamentally believe that good housing encourages strong social connections and enhances a feeling of belonging. However, it must be the right type of housing including one and two-bedroom properties, and embrace the high design standards laid out in the Design Council Code. Also green spaces should be at the forefront of estate development in the tradition of the garden city movement.

POW+R Group will be ready to critically analyse what is set out for Whimble and then take appropriate action. We will continue **to challenge, to protect and to inform**, as 'We love Whimble', but we are OK with the little dwellings by the Telephone Box!

Alan Lascelles MA (POW+R Group

Press and Publicity Officer)

Dated: 1st April 2025



DAN PLANK

Master
Thatcher



T: 01404 823081



M: 07881 942516

daniel.plank@yahoo.com

djpmasterthatcher.co.uk



The Devon Ceilidh Band For All Occasions

See our new website: **slackmagirdle.net**

Find us on Facebook

for more details or to contact us:

01404 823083 empal1@icloud.com

New look, same great band!

• OTTERY ST MARY CHORAL SOCIETY EASTER CONCERT SATURDAY APRIL
12TH. 7.30PM, OTTERY PARISH CHURCH

Ottery St Mary Choral Society would love you to come for an evening of truly Zero Effort Listening. All you need is to let this glorious music wash over you

We have a programme of popular opera extracts: The lovely solo "Voi Che Sapete" from Mozart's Marriage of Figaro, the stirring "Pearl Fisher" duet from Bizet, and the rousing "Easter Hymn" from Mascagni's Cavalleria Rusticana, all topped off by the splendid Rossini 'Petite Messe Solennelle'.

Rossini was the early 19th century's undisputed master of catchy, fun, boisterous tunes; some of his nearly 200-year-old earworms are as popular now as the day he wrote them. He wrote 39 operas in a 20-year period of creative output, the most famous of which today are "The Barber of Seville" and "William Tell" with its well-known overture. His "Petite Messe Solennelle" of 1863-64 may be lesser known: it is a Catholic Latin mass but was barred from performance in Catholic churches because of the ban on female singers at the time. Despite Rossini's pleas, Pope Pius IX refused permission for women to sing in church. Rossini stood his ground and refused to perform it without them, so this gorgeous music slipped into relative obscurity until it was revived in the late 20th century. It expresses the joys, hopes, and fears of a composer late in his life. The skills he learnt through a long career of writing highly successful operas have filled this emotional, heartfelt music with the trademark Rossini catchiness. It has beautiful solos and duets, and rich energetic choral passages. The famous poet W.H. Auden is said to have sung extracts of it when drunk; you just need a ticket to hear it. Available now from the Curious Otter Bookshop or online at <https://www.ticketsource.co.uk/ottery-st-mary-choral-society>



OTTERY ST MARY
CHORAL SOCIETY & ORCHESTRA

7:30 pm Saturday,
12th April, 2025
OTTERY ST. MARY
PARISH CHURCH

ROSSINI
PETITE MESSE SOLENNELLE

TICKETS £16, including refreshments (accompanied children free)
Available from: CURIOUS OTTER BOOK SHOP
MILL STREET (Mon. - Sat. 9:15am - 4:00pm)
Tel. 01404 814 469
and online via:
TicketSource

gilbertstephens



EXETER
GAUGE 0 GROUP

Sunday
27th April
2025
10am-4pm

**MODEL
RAILWAY
SHOW**

VICTORY HALL
WHIMPLE
EX5 2TS
Parking. Close to
Whimple Station.
Wheelchair access.
Adults £5, u-16 FREE

Standard & narrow-
gauge layouts,
demonstrations, test
track, refreshments

www.exeter-gog.net

Take Ten Questions with Clive Pring.

Did you know that a full sized football pitch provides enough oxygen for 180 people per day, and locks in carbon? So the common grass plant on your lawn or sports pitch should not be dismissed. It has real environmental benefits. Clive has plenty of advice for you all now that Spring has officially arrived, so read on.

Tell me a bit about yourself. What was your childhood like? I am Devon born and bred, with my family originating in Newton Poppleford and East Budleigh. I never aspired to be a Professional Groundsman, but found myself gaining a degree level qualification in Sports Turf Management.

Have you always been interested in gardening or horticulture? I do not do horticulture, and most people think I cut grass for a living, I wish it was that simple! I consider myself a single crop farmer. Growing grass at a professional level is a very specialised job. It involves considering the top 300-350mm of the soil profile and then looking after the plant once it has emerged.

What jobs or experiences have led you to Whimble? The experience that led me to Whimble was helping Victoria and Lee develop Whimble Football Club. As a Professional Groundsman I was asked by several clubs to help out, but none were as convincing as Whimble FC. They are a great club and I still play Veterans football for them.

What is it like being responsible for sportsground maintenance at a professional level? I looked after the training grounds and St James Park Stadium, for Exeter City AFC. This was a stimulating opportunity that enabled me to experience a very special role. Because there are only 92 Professional Clubs in England, only 92 people share this position of 'Head of Grounds at a Professional Football Club'.

What qualifications are required? The minimum educational requirement for head groundsman at any Professional Football Club is a Level 3 HNC, but I hold a Level 4 qualification.

What do you love about your job? I love end of season renovations because I have the opportunity to put the pitch back to its perfect state before it becomes used again. I am currently using my 36 years of experience to help grass roots clubs achieve their potential, which is very rewarding. I run Kepring Groundsman with my partner Victoria and we currently help 90 Clubs in Devon and Cornwall improve their pitches and facilities.

What advice can you give to gardeners at this time of year? Preparing a lawn is all about what you want from it. Measuring expectations is key to the type of work you should carry out. '*No Mow May*' for me, was a strange idea. I think it would be better to have an area set aside that does not get mown for the entire growing season. In all non-professional sports surfaces or lawns there are weeds. (weeds are only plants that are in the wrong place, in my opinion ☹️) These plants learn to grow under the height of cut. For example, on Cricket wickets and outfielders I have seen buttercups, daisies and other plants that grow sideways at a cut height of 22mm to avoid the mower. Nature adapts. My advice for lawns would be:

- Spring time raking to take out debris,
- Overseed because the mown lawn does not produce seed,
- Aerate the soil and alleviate compaction, then feed, and mow.
- Use robot mowers for larger areas to allow you to enjoy the lawn, (which we now sell).
- Make sure that no more than a 1/3 of the leaf is cut at one time.

Do you have any funny anecdotes or strange requests/jobs? I think being asked to water pitches at half time by the manager, which resulted in drowning the cheerleaders has always caused entertainment for ECFC fans.

Is there anything of specific interest regarding Whimble playing fields you'd like to share? Whimble is so lucky to have this facility, kindly gifted by the Whiteway Family. The Recreational Trust has provided a Football Pitch, a Tennis Club and a Cricket Wicket and Outfield, including a Clubhouse. There is huge scope for all the organisations to work together to provide further facilities, including the Parish Field and other parks. Youngsters start their journeys into sport through what they have at hand, locally. Their fads and popularity change over time. Adults in sport can also inspire future generations. I feel I do this in Veterans Football by encouraging people of my age to engage in sport, whilst also having two generations below me come and watch.

What do you love about Whimble? Whimble is vibrant, supportive and cohesive. There is always something going on and so much to enjoy. It would be nice to see more collaboration with business, sport and community projects. We visit several villages and small towns in Devon and Cornwall during our working life, and see collaboration as the major benefit to the community. More collaboration would be great.

You can contact Clive at clive@kepring.co.uk for seed, fertiliser and robot mowers and to ask for help and advice



Image from Kepring Facebook page



WHIMPLE CHURCH

<http://churches4all.org/>

Hello my friends,

EASTER

Easter will soon be with us, but what does it mean to you? Is it just another Bank holiday weekend, a time to eat a lot of chocolate, a few days when we can just relax and enjoy ourselves; or does it have a deeper meaning?

For practising Christians, of whichever denomination, Easter is simply the most important time of the year because it remembers the sacrifice that Jesus made for us all to bridge the gap between us and God.

Perhaps one way to think about it is this: On the 11th. November each year at 11 am the country has a two-minute silence, as we rightly remember all the gallant men and women who sacrificed their lives in wartime, so that those of us alive today can live in peace.

Easter gives us the chance to remember the sacrifice that Jesus made for us, giving his life so that we can all live in the spirit and love of God. Enduring a cruel and slow death, nailed to a wooden cross, hung up and left to die.

The season of Easter for Christians really starts on Ash Wednesday, the 5th March, when we begin Lent which recalls the forty days that Jesus spent alone in the mountains without food and water being tempted by the devil.

It is a time Christians use to reflect on our own lives and perhaps challenge ourselves.

Then as we draw closer to what a lot of people think of as Easter, the bank holiday weekend, we mark a series of other special events:

Palm Sunday

Maundy Thursday

Good Friday

Easter Sunday

Palm Sunday

The day Jesus entered Jerusalem in triumph, riding on a borrowed donkey.

The crowds who had heard of his teaching and healing, flocked to greet him, laying palm leaves on the ground before him.

Today we fly flags to celebrate great occasions as visible public symbols of a time of celebration, so on Palm Sunday we celebrate by handing out palm crosses in church which we hold during the services that day, a visible symbol of the same celebrations Jesus received. This service will take place on Sunday 13th. April at 10 a.m. at Whimble Church

Maundy Thursday

The service this day remembers the last supper that Jesus held in the upper room with his friends, the twelve apostles, when he broke bread and said to them 'Take, eat this bread in remembrance of my body', likewise afterwards he took the wine and said 'Take, drink this in remembrance of me'. For over 2000 years Christians have been doing this in our churches when we share Holy Communion.

After supper he washed the apostles' feet. The full account can be read in the Gospels. This year the service will be held at one of the other churches in our group of nine - Clyst Hydon church at 7p.m on the 18th. April.

Rev Marc



Coffee & Cake is back!

**Every Saturday from
19th April – 25th October**



**10:15-12pm
Everyone welcome –
St Mary's Church, Whimble**

Longfield Cattery

heated single and double chalets
personal care and attention



(now also looking after small animals)

01404 822275

stephen@longfieldcattery.co.uk

www.longfieldcattery.co.uk

Longfield ~ Church Road ~ Whimble ~ Exeter ~ EX5 2TF

How would you describe Planet Sal for those who haven't visited it yet? It is quirky,

AERIAL SERVICES (Mike Cummings)

- Same Day Service Available
- 7 Days A Week
- Sales, Service, Installation
- Repairs & Reception Problems
- Digital Aerial Upgrades



- NO CALL OUT CHARGE
- FREE ESTIMATES

01392 279513 07836 641635

www.aerial-services-mikecummings.co.uk

Devon's countryside is under threat

Now more than ever



**You can help protect it.
Join us today.**

DEVON CPRE

The Voice for Devon's Countryside

**01392 966737
devoncpre.org.uk**

A charitable incorporated organisation with registered charity number 1175228
A member of the National CPRE network

WE KNOW WHO WANTS
TO LIVE IN YOUR PROPERTY



ASK FOR A FREE VALUATION

FOR FRIENDLY AND PROFESSIONAL
ADVICE CALL US ON 01404 814306

www.redfernproperty.co.uk



Zoopla.co.uk

Lee Maddicks

David Drew



**PLANET SAL FOR
GIFTS AND CARDS
WHICH ARE A BIT 'UNUSUAL'**
(Like the owner..)

3, BLACK LION COURT,
HONITON EX14 1ES
01404 45777



OPEN MON 11 - 3
TUES-SAT 10 - 4.30
www.planetsal.co.uk
info@planetsal.co.uk

Covering Exeter and
surrounding areas.

DE WINDOW
CLEANING SERVICES

☎ 07496 961 255

f D E Window Cleaning Services

"FREE GUTTER CLEAR"

IF YOU SIGN UP TO A REGULAR WINDOW CLEAN

LIMITED TIME ONLY DEAL

CALL US TODAY
07496 861 255

PROFESSIONAL, RELIABLE & FULLY INSURED



Terms & Condition Apply:

Free gutter clean on your 7th window clean

If you are not 100% satisfied with any of our services,
simply notify us within 24 hours and we will return & re-do
any unsatisfactory work- It's our promise to you!



R J Spellman

Renovation & Property Maintenance

.....
Carpentry & Joinery
Kitchen Fitting & Remodelling
Wardrobes & Fitted Furniture
Window & Door Fitting
Plastering & Painting

Fully Insured

.....
For a free quotation or advice please get in touch
e: rjspellmanrenovation@gmail.com
w: rjspellmanrenovation.co.uk
t: 07511 533 765

Seasoned Logs

Full load £220
Loose tipped approx. 2.5m³

Half load £120
Loose tipped approx. 1.25m³

Bulk Bag £70
approx. 0.625m³



Martin Newbery

07967 219559

martinjohnnewbery@hotmail.com

Newberyfirewood.co.uk



WHIMBLE TENNIS CLUB

Your own private court near the centre of the village

- Low-cost membership
- Members only
- A well-maintained tarmacadam court
- Regular social sessions
- On court booking system
- Coaching available

Contact Viv Brown on 07876653264 or email whimbletennis@gmail.com for more details



Your Mortgage Specialists

Experts Since 2007

We can help you with...

Income
Protection

Residential
Mortgages



Buy-to-Let
Mortgages

Commercial
Finance

Life
Assurance

Development
Finance



Critical
Illness
Cover

Self-Build &
Custom Build
Mortgages



Bridging
Finance

Equity Release
& Lifetime
Mortgages



5* Reviews | Google & Facebook

☎ 01404 813050

✉ info@exemortgages.co.uk

🌐 www.exemortgages.co.uk

The Milking Parlour, Clapperentale Farm, EscotPark, Ottery St. Mary, Devon EX11 1LU

Your property may be repossessed if you do not keep up payments on a mortgage or loan secured against it. Exe Mortgages Ltd. is authorised and regulated by the Financial Conduct Authority (FCA). We are registered under the Consumer Credit Act & Data Protection Act and hold the appropriate licences. Exe Mortgages is entered on the Financial Services Register under reference 705540.

WHIMPLE GARDEN SAFARI

June 21st & 22nd 2025

Please put the dates in your diary.

**Maps will be available in May
Refreshments and stalls at the hall.**



CONTACT: Barry Goodman

CALL: 07866724242

EMAIL: ocbarn@gmail.com



WHIMPLE VICTORY HALL

Registered Charity 291496
Extension Plan Update



The village hall trustees work tirelessly behind the scenes, dedicating their time and energy to enhancing the hall for the benefit of the entire community.

We hope our efforts make a lasting impact, creating a space for everyone to enjoy and come together.

What are we up to?

- 1. Preparing to replace the roof**
school summer holidays 2025
- 2. Extension planning application**
submitted in March 2025
- 3. Fundraising**



Managing the day to day running of the hall

THANK YOU TO EVERYONE FOR YOUR SUPPORT.

Concert production of Gilbert & Sullivan's comedy..



WHIMPLE CHURCH

Friday 2nd May 7.30pm - Saturday 3rd May 7.00pm

Refreshments available - Great family entertainment!

ADULTS £7.50 UNDER 16S £1

Tickets on sale from Ticketsource
& Whimble Stores (+2% for card sales at shop)
www.ticketsource.co.uk or use this QR code...





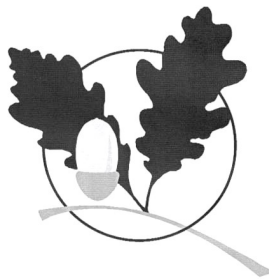
GEOFF DELVES ROOFING

**YOUR FRIENDLY, LOCAL ROOFER,
WITH OVER 30 YEARS IN THE TRADE
PLEASE CALL ME IF YOU WOULD LIKE
A QUOTE FOR ANYTHING FROM
REPAIRS, FLAT ROOFING AND
TILE REPLACEMENTS, TO A FULL ROOF
INSTALLATION OR SLATE WALL
CLADDING.**

**07939 879305
(WHIMPLE)**

Oak Building Services

Quality works at competitive rates



renovations
extensions
patios & fencing
decoration
bathrooms
kitchens
roofing
carpentry
maintenance

References for all past projects available

Contact Trevor Oakaby
at Brickyard Cottage, Whimble EX5 2PP
on 01404 822655 evenings & weekends



PLANNING & HERITAGE

Avalon provides advice on an array of planning and historic building issues, adding value to larger or more complex projects, providing a bespoke service to suit any requirement.

Whether you intend to construct a new building(s), expand your current site, adapt an existing structure or evaluate an investment opportunity, it makes sense to consult a professional who shares your aspirations.

11-15 Dix's Field, Exeter
01392 581150 (also in Whimble 823617)
07979 518976

murray@avalonplanning.co.uk

www.avalonplanning.co.uk



Was that spring then? A week of magical mornings, splendid sunsets and frosty windscreens? Swiftly followed by dreary days of dismal rain and wet dogs after walking. Back to winter next week. Whatever the weather, Whimble WI always offers a warm and friendly welcome on the second Tuesday of the month, 2pm in the Hub on Willow View Park.

We kicked off the new year with a social afternoon and handbag bingo. Who knew that stuffing your most cavernous handbag with every conceivable item, if called, from a button to something only slightly smaller than a fridge could win the prize. Instead of shouting "house" we could have shouted "handbag". I didn't win but it was really good fun

We enjoyed some fabulous fine dining for our post Christmas lunch in a local restaurant. It was thoroughly enjoyed by everyone and our thanks, as always, to Jane for organising the event.

Late January we fielded two teams for the WI county quiz competition. Held simultaneously with WIs throughout Devon, 14 local teams assembled in America Hall. The highlight without doubt was the scrumptious cakes baked and served by the ladies of Whimble WI under the guidance of Jane. Both of our teams performed well in the quiz and if only we'd remembered that the Nile is the longest river and realised the wren is the commonest bird, we could have been chasing a place on the podium.

Our February meeting was eagerly anticipated and did not disappoint. Paul Rendell spoke about some of the Dartmoor locations used by filmmakers over the years, with fascinating footage to enhance his stories. He spoke about War Horse, directed by Steven Spielberg. I wish I could share some scintillating snippets but my best titbit focuses on the outdoor activity centre which became Albert's farmhouse home. Mr S had its natural slate roof covered in plastic thatch for effect. He also wanted a tree in front of the farmhouse so one of the flatpack fully leafed variety was brought in and was planted in front of the farmhouse for effect. Polystyrene boulders were strewn hither and thither for the carts to negotiate. I could go on.....

Early March we continued our Wl county skittles campaign. Having somehow survived the first two rounds, we were up against the seemingly much younger and far more enthusiastic ladies from Exminster. Worryingly we were slightly ahead until the last round but then our (mostly my) lacklustre performance put us slightly behind and so we are not required for the next round. Phew!

Our March meeting saw us travel with a family from Ireland to the wild west in the mid 1800s. Marcus Paul gave a fascinating account of the perilous journey this family undertook and spoke of the conditions and adventures they encountered along the way.

Already in the pipeline for this coming year are social lunches and social skittles, a summer outing, a fundraiser, a summer garden party. We'll be integral to the refreshment offering for WhimbleFest and evident with cakes and biscuits for the Christmas fayre at King's School. To name but a few!

If there is anything in my ramblings that has inspired you to give us a go, then please do! Contact Marilyn on 01404 821860 for further details.

Until the next time....

Di Eden

 **gilbertstephens**

Local legal & financial advice

Call our Exeter office on:

Legal Services **01392 42 42 42**

Financial Services **01392 34 64 64**

Or contact one of our other offices

Ottery St Mary 01404 81 22 28

Sidmouth 01395 51 24 43

Visit **gilbertstephens.co.uk** for more info

Gilbert Stephens is the trading name of Gilbert Stephens LLP which is authorised and regulated by the Solicitors Regulation Authority (no. 536070) and Gilbert Stephens Financial Services Ltd which is authorised and regulated by the Financial Conduct Authority (no 579899).



WARTS

DATES FOR 2025:

24th March

14th July, 13th October

We would kindly remind you:
ALL ORDERS FOR OIL SHOULD BE
PLACED AT LEAST
ONE WEEK BEFORE THAT DATE

(Minimum order: 500 litres. Please
allow a further 10 days for delivery)

All existing (and potential new)
members with access to e-mail may
contact Graham Batten with their
order/*registration at
grahambatten0@gmail.com.

If you are without email you may call
01404 823317

COMPASSIONATE HOME PET EUTHANASIA for dogs and cats by Woodbury vet Sara Dunne



Book online
rainbowbridgevets.co.uk
or call 01392 240608

*'Your pet's final
goodbye at home'*



Ley's Aerials

Tel: 01404 821611

Mobile: 07866 464411

E-mail: leysaerials@gmail.com

Chris Ley

Nuttaberry, Church Road

Whimple

EX5 2TA



- Aerial & Satellite Dish Installations & Repairs
- Freeview & Freesat Reception Solutions



Book Online at: www.leysaerials.com

A Window on Whimble's Weather – January/February 2025

The first two months of 2025 brought typical winter conditions to Whimble, with temperatures and rainfall generally around seasonal norms. Despite this, two named storms brought notable weather events for January.

Slewton Crescent Weather Station: <https://bit.ly/35qwR9K>

Cobden Lane Weather Station: <https://bit.ly/3bt3FTf>

January – was, surprisingly, mostly dry with slightly above average sunshine, but total rainfall was much higher than usual, with 147.6mm compared to the average of 93mm, mostly because of rain on 4th-6th (46mm) and by Storms Éowyn and Herminia (together - 60mm). Temperatures were close to normal, with an average maximum of 8.6°C (historical average: 8.5°C) and a minimum of -5.5°C on the 3rd. Storm Éowyn on the 23rd-24th brought wet and windy conditions, but Whimble avoided the extreme weather seen elsewhere in the UK. However, Storm Herminia on the 26th-27th brought very high winds (gusts to 68.1 km/h), heavy rain (42mm), thunderstorms, and some local flooding.

February – was slightly drier than usual, with 69.3mm of rain compared to the average of 78mm. The wettest day was the 23rd, with 14.8mm recorded. It was slightly milder, with an average maximum of 9.2°C (historical average: 8.6°C). The warmest day was the 22nd at 13.8°C, while the coldest night fell to -2.9°C on the 28th. Sunshine for the month was well below average but the last 4 days of the month at last brought the sun back after a generally dull winter season.

2025	January	Date	February	Date
Warmest Day	13.1 °C	05/01/2025	13.8 °C	22/02/2025
Coolest Night	-5.5 °C	03/01/2025	-2.9 °C	28/02/2025
Windiest 24hrs	53.6 km/h	27/01/2025	38.1 km/h	21/02/2025
Highest Gust	68.1 km/h	27/01/2025	49.7 km/h	23/02/2025
Wettest 24hrs	30.5 mm	26/01/2025	14.8 mm	23/02/2025
Av. Maximum	8.6 °C	N/A	9.2 °C	N/A
Av. Minimum	1.1 °C	N/A	3.3 °C	N/A
Total Rain	147.6 mm	N/A	69.3 mm	N/A
Total Sunshine	40.1 kWh/kW	106.7% of Av.	46 kWh/kW	87.2% of Av.

Phil Dominy & David Brewer. Please send any comments/questions to dominypr@hotmail.com



You may think that when the Heritage Centre is closed, we all go home for a rest. Far from it – in fact the winter months are often as busy, if not busier, than the summer as we prepare for the next season.

We are very excited this year to be taking part in the Festival of Devon in the 1920s.

This is being organised by the Devon History

Society, Devon Family History Society, South West Heritage Trust, and The Box in Plymouth and is the culmination of several years of research into what life was like in Devon one hundred years ago. There are more than forty events and exhibitions taking place across the county, including a special new display, *Whiteway's in the 1920s*, at the Heritage Centre. We are very grateful to the Festival organisers for funding this. There will also be a 1920s themed musical event at the Heritage Centre on 12th July – more details in the next edition! You can find out about all the events at www.devontwentiesfestival.co.uk (see QR code).

The more eagle eyed among you will have noticed some activity at the Heritage Centre recently. We are very pleased to announce that we have been awarded a grant of £20,011 from East Devon District Council's Carbon Action Fund to pay for the installation of solar panels, LED lighting, and energy efficient smart heating, all of which is projected to reduce the Heritage Centre's energy consumption carbon footprint by 78%. In addition, we have been awarded another small grant from East Devon District Council's Cultural Programme to pay for ten temperature and humidity dataloggers plus hub and a water leak sensor, which will enable us to maintain optimal conditions for the preservation of the artefacts in our care. The Carbon Action Fund and Cultural Programme are both funded by the UK Government through the UK Shared Prosperity Fund, and we are very grateful to East Devon District Council for all their support with these projects.

Our first day of opening in 2025 is Wednesday 2nd April. Please note our new opening hours which are 12pm-4pm on Wednesdays and Saturdays, and 10.30am-4pm on Bank Holiday Mondays. Entry remains free although donations towards Heritage Centre running costs are always much appreciated. We look forward to seeing you!

Tina Kelly



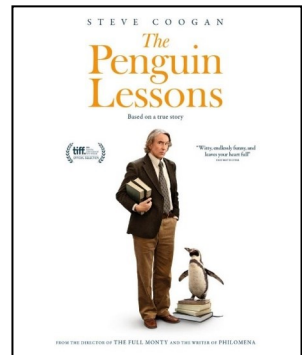


front Row Club

WHIMPLE

Film Night allows you to see the best of current releases, along with some classic favourites, in friendly surroundings and on your doorstep. People come from several of the neighbouring villages and towns, so it's not a closed shop!

In January we had a great turnout of almost 70 for 'One Life', which told the story of Sir Nicholas Winton, a young London stockbroker who, in the months leading up to World War II, rescued over 600 children from Nazi-occupied Czechoslovakia. February saw a sparser audience for the 2018 Oscar Winning film 'The Shape of Water'. Maybe Whimple wasn't quite ready for monster-human romances! We do like to mix things up though and try to schedule films that you may have missed alongside the big popular releases.



Coming over the next few months we have another great selection of films including Lee (Kate Winslet), Here (Tom Hanks) and The Penguin Lessons (Steve Coogan). Check out the notice boards outside and inside the hall to see what's showing when.

Monthly film nights at the Victory Hall

Doors open 7pm for 7.30pm

BYO drinks and glasses

**All welcome. Non-members £5 on the door or
£20 for the whole season**

Upcoming dates: Saturday 10th May,

Saturday 14th June



Hilary Ceremonies

01404822581

hilarynowill@btinternet.com

www.hilaryceremonies.com

Life celebrated with joy, creativity, passion and compassion
Funerals, wedding ceremonies and naming days

the mindful gardener

*What business do I have
in the woods if I am thinking of
something out of the woods?*

Thoreau



Mindful maintenance of
the garden you have
created



Mindful planting schemes:
transforming your desire into a design
that works for its purpose



Mindful of your current
wishes for your garden



Mindful of the
environment



Mindful attention
to special plants



Mindful of
biodiversity

....giving you peace of mind

For more information contact Elaine Nicholas 07917386254 elaine@danubblue.org.uk

LOVELY VENUE
with
PARKING
&
UNDERFLOOR
HEATING

YOGA WITH SARAH



TUES 6.30 - 7.40pm (evening unwind)
THURS 9.30 & 10.45am (morning flow)

at

**THE HUB, WILLOW VIEW PARK,
STRAIGHTWAY HEAD, WHIMPLE**

Suitable for all levels

£9/class or 6@£48

Contact reviveguernsey@gmail.com

07591 599162



Rochelles' Curtains, Blinds and Foam

Phil-kendall@hotmail.co.uk

07525 618286 (Phil)

We come to you
for measuring, quoting and fitting

Made to measure Curtains and Blinds
Wide selection of fabrics
Tracks and poles
Fitting service
Free measuring service
In-house making service
We also make with your own fabric
We make covers for foam cushions

FOAM cut to size for upholstery/caravans/boats etc.
Revive old furniture.
Upholstery foam/Closed cell foam/Memory foam toppers
Polystyrene bead for bean bags

Gas & Oil boiler repairs
Safety certificates
Servicing
Installations



FlameFix™

A local company providing
a personal service

Call Jules

07883 037667

Visit us at www.flamefix.co.uk
and read why customers say
we're highly recommended

Oftec registered
Gas safe registered



FIRE SECURITY

UK LIMITED

Fire detection and alarm systems

**INSTALLATION, COMMISSIONING
& SERVICING**

Maintaining all types of fire alarm systems

- Domestic, commercial & industrial
- 18 years of experience
- Emergency repairs and fault finding
- Fire certificates
- Design and supply complete systems
- Schools, lets, small/large properties

Contact Chris for a free quote

07875 841288

info@firesecurityuk.co.uk
www.firesecurityuk.co.uk



News from Whimple Preschool!

It's been a while since I have put an update in the Whimple News so thought it was about time I did!

Preschool continues to thrive as a fantastic early years setting for children aged 2.6 - 5 years. We are currently full and places are filling up fast for next year (September 25– July 26).

We want to give priority to children who live in the village so, if you have a baby or toddler and would like them to attend, please do get in touch to get them on the waiting list. We usually take children from 2.6 years, but can take them slightly earlier if space allows.

Please visit our website for more information.

We are a registered charity and are overseen by a voluntary committee (usually parents but doesn't have to be).

Their main role is fundraising as, without this, our preschool would close because government funding does not cover the running costs. So we are reliant on getting new parents, and other residents in Whimple, involved in supporting preschool, so that we can keep it going in our lovely village for future generations.

The children who attend preschool have the benefit of the lovely big garden, where they spend lots of time getting fresh air and exercise, exploring the garden and nature through the seasons. We are currently enhancing our covered pond and nature area to make it more engaging for children, as we received some funding for this. It seemed like a long, wet winter this year, which resulted in the garden being very wet and muddy—the children all got used to putting on their waterproof suits each day so they could enjoy the muddy puddles! We now welcome drier, warmer spring days, and Otter Nurseries kindly gave us some daffodil bulbs in the Autumn. The children each planted up a pot to grow at home and we have planted lots around the garden, which are lovely to see now. The children are currently observing tadpoles growing, which they are really enjoying.

We celebrated World Book Day recently. The children all dressed up and brought in their favourite book to share with us.

We have 2 weeks now until the Easter holidays, so will be doing lots of Easter crafts and having an egg hunt in the garden!

Please look out for news on our forthcoming fundraisers!

If you would like to support us at no cost to yourself whilst doing online shopping, please sign up to Easy Fundraising -

<https://www.easyfundraising.org.uk/causes/whimplepre>

We have raised nearly £800 so far! This makes a huge difference in helping us to buy new resources.

Jo Sibley, Preschool Manager

PEST CONTROL DIVISION



KIERON 07977 648791



email: greenrockgap@gmail.com



ABACUS
Stone Conservation

Masonry & Conservation Specialists

Repairs to Listed
and Historic Properties
Traditional Lime Mortar Repointing
Brick Repairs - Walling

Clyst St. George, Near Exeter

Tel: 01392 879824 Mob: 07825 698507

Email: info@abacusstoneconservation.co.uk

Web: www.abacusstoneconservation.co.uk

Window Cleaner

High reach hot water system

Frames and doors all in

Gutters/Fascias Cleaned

For that personal service

**Sean
Harris**

814963

07737 419077



Foot care practitioner and private carer

I am a qualified, experienced
home based carer.

Foot care including nails,
massage, and minor problems

All jobs from housework,
and companionship
to full personal care

Experienced in
dementia care

Please call **Lucy** for details

07974 114412



S.W Podmore

Podmore building
services

25+ years experience

Local and reliable

Most aspects of building work
undertaken

Small plumbing jobs

Call for a free quote or advice

Shane 07943211869

shane.podmore@gmail.com



Trusted Tech

Reliable IT Support Services

Slow computer?

Unreliable internet connection?

Looking for friendly, one-to-one computer tuition?

Trusted Tech can help!

Contact us today!

07989 708629

william.grimsley@trusted-tech.co.uk

www.trusted-tech.co.uk



PF&A

PREMIER FENCING & ASTRO

**QUALITY FENCING & ARTIFICIAL GRASS
AT PRICES YOU CAN AFFORD**

EXETER • 01392 341 315

EAST DEVON • 01395 205 563

info@premierfencingandastro.co.uk

www.premierfencingandastro.co.uk

FENCING ■ DECKING ■ GATES
ARTIFICIAL GRASS ■ LANDSCAPING

Looking after your trees and
gardens for over 25 years

Sid Valley Tree Surgery & Landscapes

TREE SURGERY
HEDGE CUTTING
STUMP GRINDING
GARDEN CLEARANCE
FULL LANDSCAPE SERVICE
FREE QUOTATIONS



Tel: **01395 519856**
Mobile: **07880 797613**
www.sidvalleytreesurgery.co.uk



James Brewer Quality Made Joinery

Ellicombe House
Cutteridge Lane
Whitestone, Exeter EX4 2HE
Tel: 07896 530640
Fax: 01392 811604



Email: jbrewer2410@hotmail.co.uk

(not VAT registered)

*Please contact me for all
your carpentry and joinery
needs, i.e. doors, windows
and furniture, I will be
pleased to give you a
quotation.*

darren peek plastering contractor

plastering and rendering,
dry-lining, coving,
cob and lime specialist,
floor-screeds,

mobile 07786514172
tel 01404 41211
darrenpeek2@aol.com



Hello Whimple!

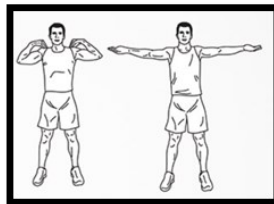
This edition, we have some fresh exercises to keep your body moving. Let's remind ourselves why it's important to stay active, especially as we age:

Why Moving is Important

1. **Enhances Mental Well-being:** Exercise releases endorphins, which are natural mood lifters. It can reduce stress, anxiety, and depression, and improve cognitive function and sleep quality.
2. **Increases Energy Levels:** Regular movement can boost your energy levels by improving circulation and cardiovascular health. You'll feel more energised and ready to tackle daily tasks.
3. **Promotes Longevity:** Staying active can add years to your life by keeping your body functioning optimally and reducing the risk of age-related diseases.
4. **Stay Consistent:** Consistency is key to reaping the benefits
5. **Set a Routine:** Incorporate these activities into your daily routine. .
6. **Enjoy the Process:** Choose activities you enjoy. The more fun you have, the more likely you are to stick with it.

Remember, every little bit of movement counts. Let's keep moving, Whimple, and enjoy a healthier, happier life together!

Sam Upton



Alt Arm/ Leg Abs
3 sets of 10 (Each side)

Side Leg Raises
3 sets of 1 (Each leg)

Bicep Reach
3 sets of 10

NEW FOUNTAIN INN CHARITY FUNDRAISING

THE New Fountain Inn New Year's Eve party raised over £600 in total, which was divided between

Hospiscare and St Petroc's.

Kevin's Charity Lottery Bonus Ball competition also raised an amazing total of £300 in 2024

This money was donated to Whimble Primary School.

Well done to all who supported these fundraisers and to the New Fountain team for helping these very worthy causes.



Billy Bloomfield Whimble Handyman

Window Cleaning, Lawn Cutting, Strimming, Hedge Cutting, Garden Clearance, Shed Erecting, Fence Erecting, Erection of Wooden Lean To, Fence Staining, Patio Laying, Patio Cleaning, Decking Cleaning, Decking Assembly, Jet Wash Driveways and Paths, Painting (Inside & Out), Gutter Cleaning, Gutter Renewal, Facias and Roof Repairs (10 Years Roofing Experience)



Home: 01404 822345

Mobile: 07759 466671



Whimble Cricket Club

Whimble Cricket Club - 2025 Season Coming Soon

Excitement is building for what promises to be an action-packed 2025 season at Whimble Cricket Club. After last year's near miss on promotion for the 1st XI and the 2nd XI's relegation, both teams are raring to go with promotion in their sights. Winter training has been in full swing, and with pre-season games kicking off in April, the anticipation is high.

Women's Cricket Goes from Strength to Strength

The fastest-growing part of our club is our women's cricket team, which entered the softball league for the first time in 2024. Now in just their second season, they've topped their indoor league group through the winter and are set for an exciting summer ahead. This year, we're thrilled to introduce our first-ever women's hardball team, competing in the 'Super 8s' format. We'll be hosting three tournament games at Whimble on Sunday, 27th July - come along and support the team!

Junior Cricket for All Ages

Our junior cricket programme is as strong as ever, with teams at Under 9, Under 10, Under 12, Under 13, and Under 14 levels. We're also teaming up again with Ottery St Mary Cricket Club to run the Under 13 girls' team, known as the OWLS. All Stars Cricket for 5-8-year-olds starts in May, offering a great introduction to the game. In a testament to the strength of our juniors, Whimble will have four players representing Devon this summer - an incredible achievement!

Welcoming Mitch Brooker

We're excited to welcome Australian cricketer Mitchell (Mitch) Brooker to Whimble for the 2025 season. Mitch is a talented top-order batsman and off-spin bowler from Ringwood Cricket Club in the Victorian Premier League. His summer with us has been generously sponsored by the New Fountain Inn, and we know he'll be a fantastic addition both on and off the field. He arrives on 19th April, and we're sure he'll receive a big Whimble welcome. If you know of any casual work opportunities for Mitch while he's here please get in touch.

County Games, Disability Cricket, and More

Beyond our busy schedule, we're proud to host Devon county age-group matches once again. This season, we'll be welcoming the Under 15 and Under 18 girls' teams, as well as the Over 50s and 60s sides. Keep an eye out for match dates as the season progresses. We're also committed to continuing our disability cricket sessions, which have been a huge success over the past two years. Whimble was the first Devon club to offer independent disability cricket, and we're looking forward to growing this initiative in 2025. With our usual line-up of midweek and Sunday social games, there's something for everyone at the club.

New Food and Drink to Enjoy

We're looking forward to opening the bar throughout the summer, with sunny Friday evenings ahead we hope. As always, the bar will be open on Saturday and Sunday afternoons when home fixtures are on. New for 2025, we'll be serving Chunk pies and Styles Farmhouse ice cream alongside our range of drinks from Courtney's, who continue to support the club.

Get Involved!

Whether you're looking to play, at junior, adult, social, or league level, volunteer as an umpire or scorer, or simply support the club and soak up the Friday night atmosphere, there's a place for everyone at Whimble CC. We also have a range of sponsorship opportunities, starting from just £60 to sponsor a player. For all the latest news, fixtures, and ways to get involved, visit www.whimblecc.co.uk or follow us on social media.

Dates for Your Diary

Here are some key dates for the 2025 season:

- 13th April – Away pre-season game at Budleigh Salterton
- 25th April – Junior training starts (12 sessions, running until 18th July)
- 3rd May – League cricket begins
- 9th May – All Stars Cricket begins
- 6th June – Egg Catching (a club favourite!)
- 5th July – Vice Presidents' Day
- 27th July – Women's Hardball Super 8s Tournament
- 25th August – Whiteways Cup
- 30th August – Final league games & end-of-season social
- 1st November – Bonfire & Fireworks Night (Halloween theme!)

We can't wait for another fantastic season and look forward to seeing you at the club soon. **James Woollam**

As mentioned in the last edition of the News, we started the year with our AGM which once again was very well attended. We were able to reflect on another successful year with all the events that were organised well supported and very much enjoyed by all who attended them. Fortunately, all our Principal Officers agreed to stand for another year which at least gives us some good continuity for the next twelve months. However, it was again recognised that we need to encourage new members to the Club and hopefully to the Committee to ensure its future success. We are still looking for someone to help with organising the very successful coach trips that we like to run each year. Therefore, if we are to continue to try and organise some more of these trips, then we would be very pleased to hear from anyone who is prepared to help with this.

Following the meeting we were treated to a very interesting and well illustrated talk from Branco Love on the interesting plants he saw on a recent holiday to parts of Australia. We are very grateful to Branco for putting this presentation together.

For our first main event of the year, on Friday 7th February we had a fascinating illustrated talk from Dr Andrew Ward who along with his wife Helen, runs the Norwell Nursery in Nottinghamshire. They also hold the national collections of Astrantias and Hardy Geraniums. The talk was on 'How Climate Change is Impacting Gardening Now and What We Can Do About It'. It was a particularly useful talk as they have similar soil conditions as we do and Andrew showed us a whole range of suitable plants for our soil type and climate conditions.

By the time this edition of the news comes out, we will have had our second talk which was on Friday 21st March, The talk was by Chris Trimmer and he spoke on 'The Work of the National Trust's Plant Conservation Centre'. The Centre was the subject of much media attention last year when it was revealed that they had saved the famous Sycamore Gap Tree. More details of the talk in the next edition.

On Sunday 11th May there will be a coach trip to RHS Rosemoor. With our trips to Rosemoor being so popular, early booking is essential. Last year's trip sold out very quickly so if you don't want to be disappointed, book as soon as you are able. There is a booking form is on page 54.

Our annual Plant Sale will be on Saturday 17th May from 2.00pm to 4.00pm. Once again we have been having some very trying weather conditions to get all our plants ready, but hopefully all will be alright by May! As in previous years, the proceeds all go to the running of the Flower Show in August. If previous years are anything to go by, arriving on time is advisable to get the best bargains!

The Annual Flower and Plant Show this year will be held on Saturday 9th August. As I mentioned in the last edition, this is a very special year for the annual show as it is its 70th year. We hope to make this a bumper show in recognition of reaching that milestone! We have nearly finalised sorting out all the classes for the Schedule and we hope to have copies available at the plant sale.

However, for those of you who are keen photographers, here is a reminder of the topics for this year's Show, 'Winter'; 'Lambs in Springtime'; 'A Whimble Event or Occasion'; 'Still Life'; 'A Flowering Shrub'; 'Sunrise'; 'Climate Change' and 'An Oak Tree'.. Hopefully these are topics that will appeal to you all and we look forward to seeing the entries!

We do have plans for other events this year, and details of these will appear in future editions of the News.

Paul Wilson, Chairman, Whimble Gardening Club



VISIT TO RHS ROSEMOOR SUNDAY 11th MAY 2025

**BOOKING FORMS ARE AVAILABLE AT
THE WHIMBLE STORE AND ROBERTS
HARDWARE, OTTERY St MARY.**

**Gardening Club members £15
Non-Gardening Club members £17
Price includes coach, entry to gardens
and Heritage Plant Fair.**

**Coach leaves Canaan Way Car Park Ottery at
9.00am, The Square Whimble at 9.15am.**

**Contact for Whimble is Doreen Staddon Tel.01404
823594 and for Ottery Brian Nelson Tel. 07929190078**

See overleaf for booking form

Whimble & District Gardening Club
Visit to RHS Rosemoor on Sunday 11th May 2025

To book please complete the form below.

Name.....

Tel. no.

e-mail address.....

e-mails to more than you will be sent Bcc.

Please enter below number of seats required.

GC members £15 pp. No. of seats

Non-GC members £17 pp. No. of seats

The price includes coach, gardens, and Heritage Plant Fair.

I enclose a cheque for £.....made payable to Whimble &
District Gardening Club

Please delete as appropriate: -

I wish to get on the coach at the Canaan Way car park Ottery
9.00am // the Square Whimble 9.15am.

If you wish to get on the coach at Whimble please return completed
form with cheque to Mrs Doreen Staddon, 1 Allergrove Cottages,
Whimble EX5 2TJ (Tel 01404 823594). If you wish to get on the coach
at Ottery to Brian Nelson, Gerway House, Gerway Lane, Ottery St
Mary EX11 1PW (Tel 01404 813643)

Alternatively, you can hand in your sealed envelope with cheque or
cash to the Whimble Stores or Roberts Hardware, Ottery St. Mary.



Your Personal Assistants

A niche group of personal assistants set up to provide top quality care and support.

Mobile: Poppy - 07786392480

Email: saskialayburn@poppycare.org



Care, Compassion and Commitment

Dedicated farm and companion animal vets and nurses,
caring for your livestock and pets
24 hours a day



Cullompton
01884 35558
Tiverton
01884 258585
Honiton
01404 44095
Uffculme
01884 841317



www.valeveterinarygroup.co.uk

SHORT MAT BOWLS



We play Short Mat Bowls every Wednesday at 7.00 pm. We are looking for new members to join us please. Come along to the Victory Hall. You will be very welcome. Bowls can be provided.

David Rastall.



PLANNING & PROPERTY EXPERTS

07896 665903

randall@buildconsultants.co.uk

**Building Design & Planning Permission
Commercial and Residential**

Hot Desks for rent daily
Co-working Space

Experts in nature

Whimpe-based tree surgeon

Dendrologic
Arboricultural solutions

Arboriculture
Tree pruning + removal
Hazardous trees
Tree health
Planting and establishment

Ecology
Habitat management
Advice
Survey

Contact Dylan on: 07828 013 486
dendrologictrees@protonmail.com

Always FREE delivery
to Whimble
(no min. order value)
#supportlocal



SAVE THE DATE
20th & 21st September
- Courtney's Orchard
Open Weekend -



Traditional, Cloudy, Fruit and Low-Alcohol

CIDER - available in bottles,
3L pouches and 20L bag-in-boxes.

APPLE JUICE - still and sparkling

From our ancient
Whiteways Orchard in Whimble

THE EXE GIN
Grumblebee Honey Spiced Rum
70cl, 35cl and 5cl gift sets



Order online:
www.courtneysdrinks.co.uk
01404 890093 (Mon-Fri / 9am-5pm)

Also available at:
Jack in the Green, New Fountain Inn,
Whimble Cricket Club and Whimble Stores

'Whimble's very own drinks producer'



Scan to order



Another term has flown by as we head towards Easter.

We held a Skills Builder Workshop for parents in the hall, which was well attended. The session included practical activities to develop the essential skills: listening, speaking, teamwork, leadership, problem solving, creativity, staying positive and aiming high.

Every year we celebrate World Book Day, and this year was no different. Our school council select some authors, we then encourage our children to dress as characters from their books and try and guess who they are. The staff all dressed as crayons from the book 'The Day the Crayons Quit' by Oliver Jeffers.



We are always impressed by the time taken to make such a wide range of costumes and how unique many of them are.

I was privileged to take 8 of our year 4 children to Colyton Grammar for a Maths Challenge Day. It was a great experience for them, with around 100 children taking part from a number of schools in the local area. The children were a credit to the school using their Teamwork, Listening and Speaking and Problem-Solving Skills throughout the day.

We are also supporting Comic Relief and as they are celebrating 40 years, the School Council have picked a variety of challenges to complete in 40 seconds. The term will end with many of our Year 5 and 6 children participating in the EVF Dance Showdown at the Barnfield Theatre in Exeter, some children hiking to practice for their entrée into the Exmoor Challenge and other children playing in their Rock Steady Bands to parents.

All the staff and children wish everyone a Happy Easter.

Mrs Carole Shilston - Headteacher

admin@whimbleprimary.co.uk



Spring is here and it's time for a new season of tennis to start. Membership renewals are due on the 1st May. We've tried to keep the fees as low as possible whilst ensuring that we are putting enough aside for maintenance work. New members of all abilities are very welcome. You can pick up a membership form at the club, which is on the Broadclyst Road, just past Fordton Farmhouse on the left.

Our Thursday evening 'just turn up' and play. Mixed doubles were well attended last year and will start again from April until the clocks go back in the Autumn.

The early Sunday morning session continues to thrive throughout the year. We have 2 LTA accredited coaches affiliated to the club, Eddy Kerr and Dan Cahill, Eddy being the one who seems to pick up most of the junior coaching. You can contact him via edward.kerr14@yahoo.co.uk.

The court surface, although now almost 15 years old, is still in very good condition. The last paint job with an acrylic binder is holding up well. Last year the court was professionally cleaned. The next big project may well be the court perimeter netting, which is starting to rust through in various places. This is quite an expensive job, so while we can still repair the holes we will put this off for as long as possible.

New Subscription Rates for 2025/6

Category	Fee
Family	£95
Adult	£45
Junior/Student	£20

Rob Davis, Chair
whimbletennis@gmail.com



Open Tuesdays to Saturdays from 9am

**To book an appointment ring 01404 823400 or 07494 365547
or book through my Facebook page**

New Inn Cross, Whimble EX5 2TT. Tel 01404 823 400



Sat.

O'DELL PLUMBING & HEATING

jasonodell.plumbing@gmail.com

07974 818833

FOR ALL TYPES OF GAS AND OIL HEATING INSTALLATIONS.

BOILER SERVICE, REPAIR & BREAKDOWNS.

BATHROOMS & SHOWERS.

UNVENTED HOT WATER SYSTEMS.

UNDERFLOOR HEATING.



4094

Organisations in Whimble

Devon County Councillor (iain.chubb@devon.gov.uk)	
Iain Chubb	07932 459595, 01297 35468
East Devon District Councillor:	
Todd Olive (toddolive@eastdevon.gov.uk)	07925 847933
Parish Council (www.whimbleparishcouncil.gov.uk)	
Contact Parish Council: Amy Tregellas (clerk@whimbleparishcouncil.gov.uk)	
Primary School (admin@whimble-primary.devon.sch.uk)	
Headteacher: Carole Shilston	822584
Chair of Governors: Jackie Enright	
Whimble School PTA (Whimble.pta@gmail.com)	
St. Mary's Church	
Parish Priest: Rev. Marc Kerslake	822525
Impact Cell: Helen Bowker	823193
Bellringers: Andrea Young	07833 552855
Book Group	
Tanya Mooney	823326
Cricket Club (jameswoollam@gmail.com)	
Booking Secretary: James Woollam	07989 234372
Football Club	
Chairman: Victoria Kendrew	07966 550260
Secretary: Lee Wheaton	077341 52120
Front Row Club	
email: frontrowclub@gmail.com	
History Society	
Secretary: Jenny Fells	822104
Over Sixties Club	
Chairman: Arthur Iball	822905
Secretary: Beryl Iball	822905
Pre-School & Toddler Group (www.whimblepreschool.com)	
Chair: Hayley Seldon	07736 272668
Information: Jo Sibley 07794 652549 or admin@whimblepreschool.com	
Recreation Trust	
Knowle Cross Sports Ground: Roger Smith	822244
Table Tennis Club	
Matt Hilling	07720 838003
Tennis Club	
Secretary: Viv Brown	07876 653264
Treasurer: Glenn Starkey	07967 698600
Victory Hall	
Chair: Sue Ayres	823082
Secretary: Di Wilkins	07974 468513
Booking Sec: Ali Tierney	07778 681280
Whimble Fest	
Contact: Sue Turner	sue.turner1@sky.com
Whimble and District Gardening Club	
Chairman; Paul Wilson	822744
Whimbletons	
Cathy Bartlett-Horwood	823944
Womens Institute	
President: Sarah Hogg	822886
Whimble and Broadclyst Young Farmers:	
Secretary: Jack Tucker	07724 390839
Whimble Scouts	
Group Scout Leader: Paul Lambell (paullambell03@gmail.com)	
Scout Hut and Marquee Booking: Alex Spry (alexspry@yahoo.co.uk)	

The Whimble News Team

whimblenews@gmail.com

WN155

Editor

Samantha Upton

Contact and Advertising

Jenny Fells

Production

Bob Scanlan
Sally Wilde
Sarah Thackeray
Alex Tooze

Delivery

Cathy Sharkey

Treasurer

Miles Leonard

Community Diary

Louise Scanlan
whimblediary@gmail.com

Apsleys

CHARTERED
ACCOUNTANTS

Accountancy
Taxation
Payroll

Probate Services
R&D Tax Credits
Corporate Finance
Company Secretarial

tiverton@apsleys.com
01884 257725

Shelley
Spry



Tale Valley Care

Unit 6 Lees Meadow
Talatun EX5 2SG
info@talevalleycare.co.uk
07873 240459

Providing Personal Care Services in your home

Other services offered include:

Washing
Ironing
Shopping
Driving to appointments
Chaperone

NVQ qualification in lead adult care
Insured and DBS checked



**TIME
TO
DREAM
BIG**

HALLANDSCOTT.CO.UK



CONTACT OUR OFFICE
TODAY FOR A
FREE VALUATION
AND MORE INFORMATION
ABOUT OUR SERVICES

CALL: 01404 812000
VISIT: HALLANDSCOTT.CO.UK

the Jack *in*
the Green



COMING SOON
TO THE JACK....

CASUAL | SUMMER | DINING

'Hello small plates & sharing slates'

ENJOY OUR RELAXED COURTYARD

Bring the dog, meet up with friends, spend the evening chatting. Graze on chicken wings, dig into monkfish scampi, share a baked Camembert, devour a tasty Jack burger.

Enjoy a cold pint in the sun with regular drinks offers from our friends at Courtney's Cider.

Keep an eye on our socials - full details tba soon

www.jackinthegreen.uk.com

Jack hotline: 01404 822240